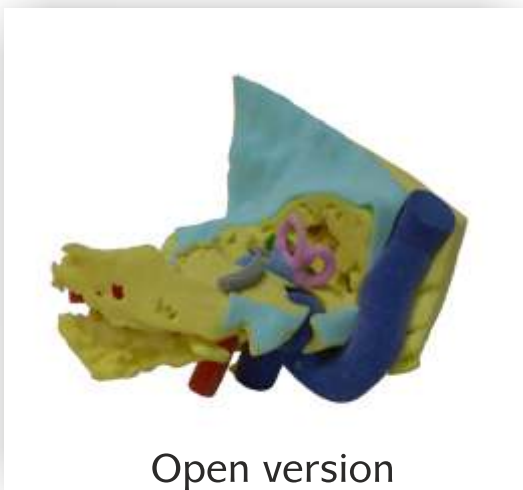
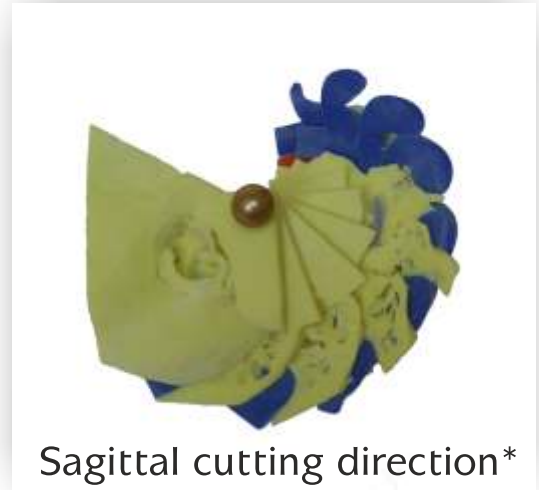


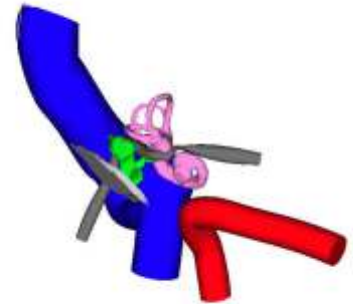
## Petrous Bone Models for Illustration



\* following the standard views in the CT, layers of 3mm thickness and 5mm thickness possible

## Fields of application

- illustration of the position of the internal Structures of the Petrous Bone
- education for medical specialists and courses of instruction / training
- visual aid for courses for Petrous Bone models (Mastoidectomy)



## Colour code

- |                          |                                  |
|--------------------------|----------------------------------|
| • cochlea                | shroud lilac, filled with powder |
| • canales semicirculares | shroud pink, filled with powder  |
| • vestibulum             | shroud lilac, filled with powder |
| • ossicle                | green                            |
| • tympanum               | light grey                       |
| • auditory canal         | light yellow                     |
| • nervus facialis        | dark grey                        |
| • sinus                  | blue                             |
| • carotis                | red                              |
| • dura                   | light blue                       |

The mastoid is depicted pneumatic.

## Item number

- FBG-0706-001 (axial cutting direction)
- FBG-0706-002 (sagittal cutting direction)
- FBO-0706-001 (open version)
- FBO-0706-002 (open version with balk)
- FBO-0706-003 (halved)
- FBO-0706-004 (measure 2:1)