

# Petrous Bone Model for Preparation / Mounting device for Petrous Bone Model

## Petrous Bone Model for Preparation

Before starting the training in microsurgery of the middle ear the complex anatomy of the Petrous Bone makes a extensive training necessary. In cooperation between the department of otolaryngology, head and neck surgery of the University of Jena and the 3di company an 3-dimensional artificial Petrous Bone Model was developed. The anatomical structures are coloured, good to identify and can therefore be taught intensively

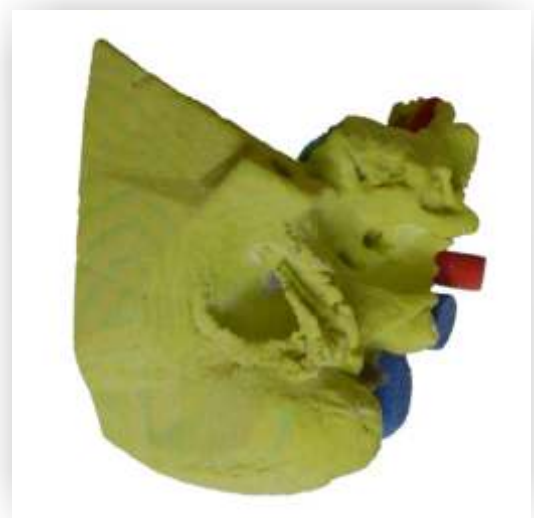
## Fields of application

- education for medical specialists
- courses of instruction / training
- visual aids
- courses for Petrous Bone Models

## Mounting device for Petrous Bone Model

This mounting device is the ideal completion and will make your exercises on the Petrous Bone Model easier.

- simulation of the surgery in a natural position
- the model does not have to be affixed in other ways
- the model can not shift
- the hands can easily be placed
- the mounting device can be used in several times



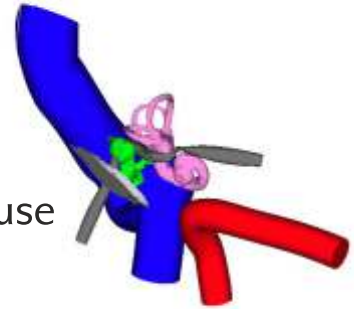
## Implanting the Future

### Instructions for handling

With drill and chisel can be practiced.

The Petrous Bone Model have to mill dry.

The mastoid is depicted pneumatic and partially filled with powder. For reduction of dust please use an extraction system.



### Colour code

- |                          |                                  |
|--------------------------|----------------------------------|
| • cochlea                | shroud lilac, filled with powder |
| • canales semicirculares | shroud pink, filled with powder  |
| • vestibulum             | shroud lilac, filled with powder |
| • ossicle                | green                            |
| • tympanum               | light grey                       |
| • auditory canal         | light yellow                     |
| • nervus facialis        | dark grey                        |
| • sinus                  | blue                             |
| • carotis                | red                              |
| • dura                   | light blue                       |

### Item number

FBH-0706-001 Mounting device for Petrous Bone Model

FB-0706-001 standard Petrous Bone Model right

FB-0706-002 right model with high-standing Sinus, well pneumatized

FB-0706-003 right model with pronounced soma zygomatica, well pneumatized

FB-0706-005 right model with low-standing dura

FB-0706-009 right model with pronounced soma zygomatica, model of a child

FB-0706-011 standard Petrous Bone Model left

FB-0706-012 left model with high-standing Sinus, well pneumatized

FB-0706-013 left model with pronounced soma zygomatica, well pneumatized

FB-0706-015 left model with low-standing dura

FB-0706-019 left model with pronounced soma zygomatica, model of a child