

Medical Hard Tissue Models in the 3D Printing Process (powder binder process)

Skull Models

Basics

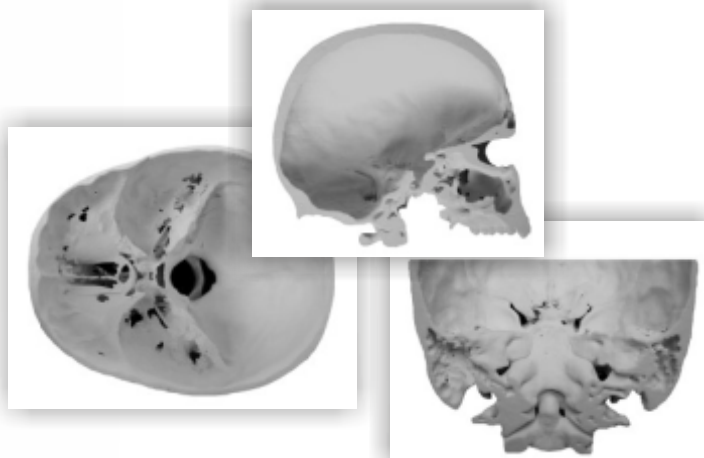
- CT data (uncompressed image data, not raw data)
- storage in DICOM format
- data transmission via secure internet portal or as CD-ROM



Maximum model dimensions
350 x 250 x 200 mm

Material

high performance
composite material
(powder material on gypsum,
solidified by organic binder)



Advantages

- detailed representation of bony structures possible
- excellent machinability for a realistic surgical planning
- colored design, e.g. for presentation objects
- fast availability, model production within 2-3 working days possible
- large build size



Medical Hard Tissue Models made of Resin Acrylate based For your Surgical Planning

Basics

- CT data (uncompressed image data, not raw data)
- storage in DICOM format
- data transmission via secure internet portal or as CD-ROM

Maximum model dimensions

140 x 140 x 170 mm



Material

- White Resin: methacrylate, white, suitable for display objects, for unsterile surgery planning
- High Temp: methacrylate, transparent, suitable to take it into the sterile operating area
- Dental SG: methacrylate, transparent, steam sterilizable, suitable for short-term use on the patient, e.g. as a template material

Advantages

- detailed visualization of bony structures possible (model layer thickness 25 - 100 μm)
- excellent machinability for a realistic surgical planning
- sterilization of the model possible (with appropriate material selection)
- fast availability, model production within 2-3 working days possible